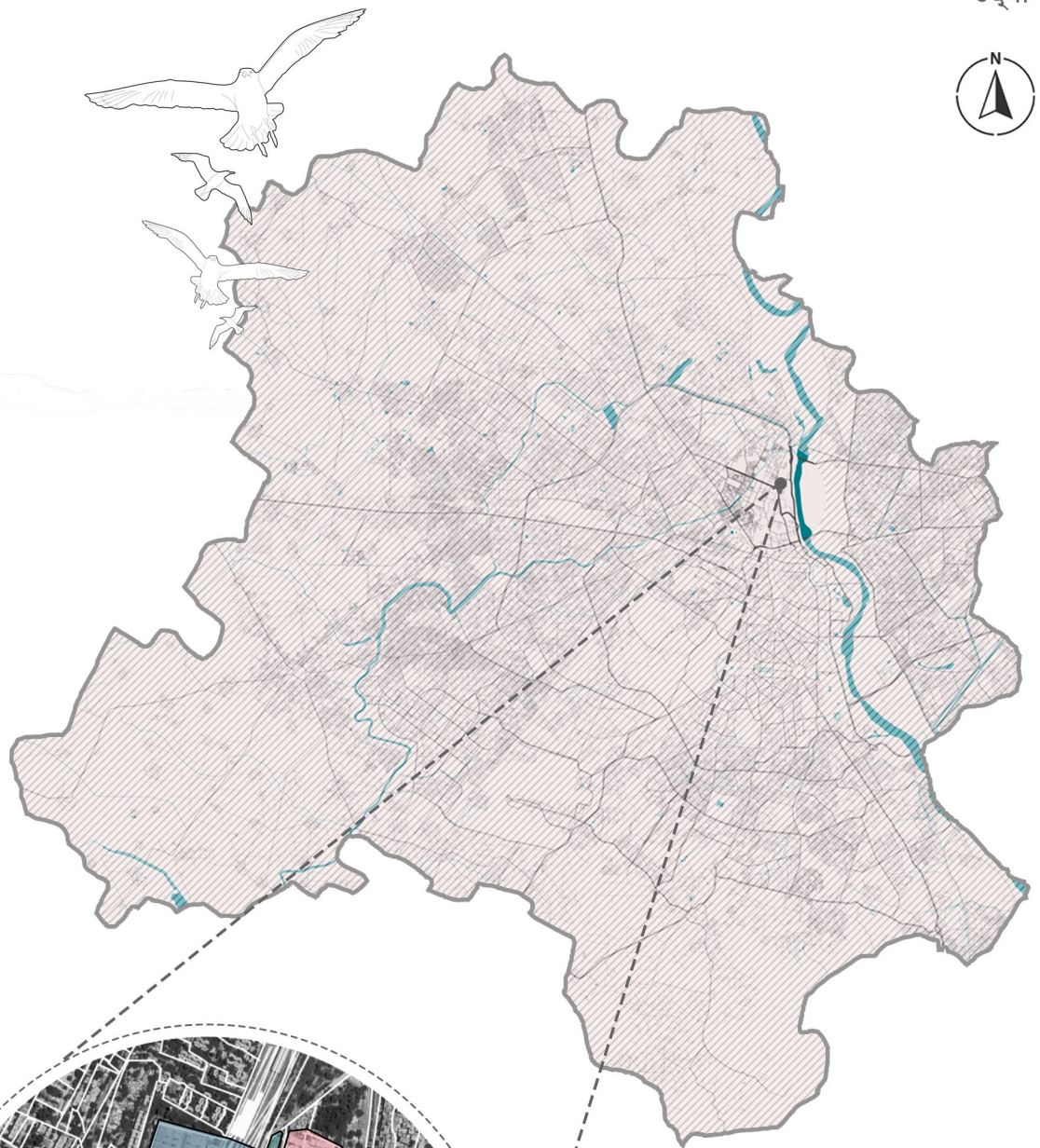
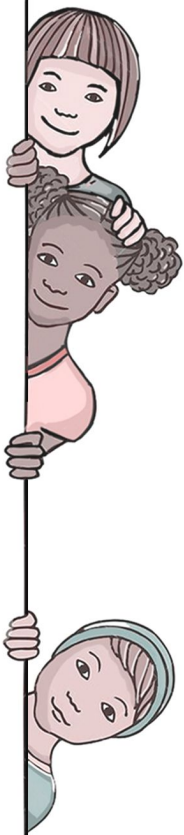


उद्यान



Observation and Action Network
2021 Grants Program



- A. DMRC Depot
- B. Majnu ka Tila
- C. Proposed Park
- D. Housing
- E. Site

Majnu ka Tilla is a colony located in North Delhi district, established around 1950. It is a unique repository of Tibetan refugees and exemplifies a successful balance of cultural preservation and assimilation into their host nation.

MAJNU KA TILA, DELHI

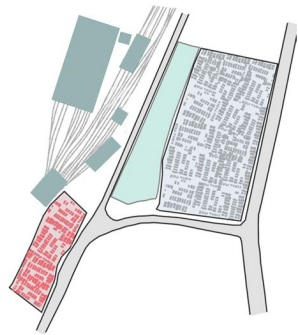
PREFACE

A group of architecture student's emotive analysis and rational response is combined to deliver a holistic approach to help benefit the public. Our training enables us to understand the unique requirements of a community-cultural, sociological and intellectual. OAN provides a great opportunity to not only recognise these issues but also work with the community to know better and act better.

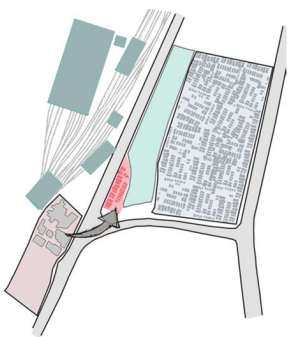
ABSTRACT

The proposal seeks to provide a recreational solution for the people of Aruna Nagar - an informal settlement around Majnu ka Tilla. Understanding the context and community, the author realises a lack of communal grounds and danger the children face playing on the streets. In designing, the proposal identifies an abandoned space near the settlement and attempts to reactivate and rejuvenate it with an intervention designed as per the needs and spreading awareness about road safety.

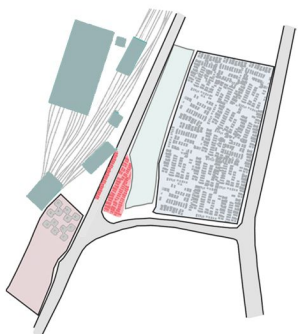
TIMELINE



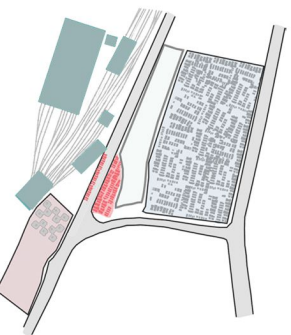
2008
Settlement residing on the proposed housing land near Delhi Metro depot.



2010
Settlement evacuated and shifted to 9 meter wide highway bylane adjacent to Delhi Jalboard Land.



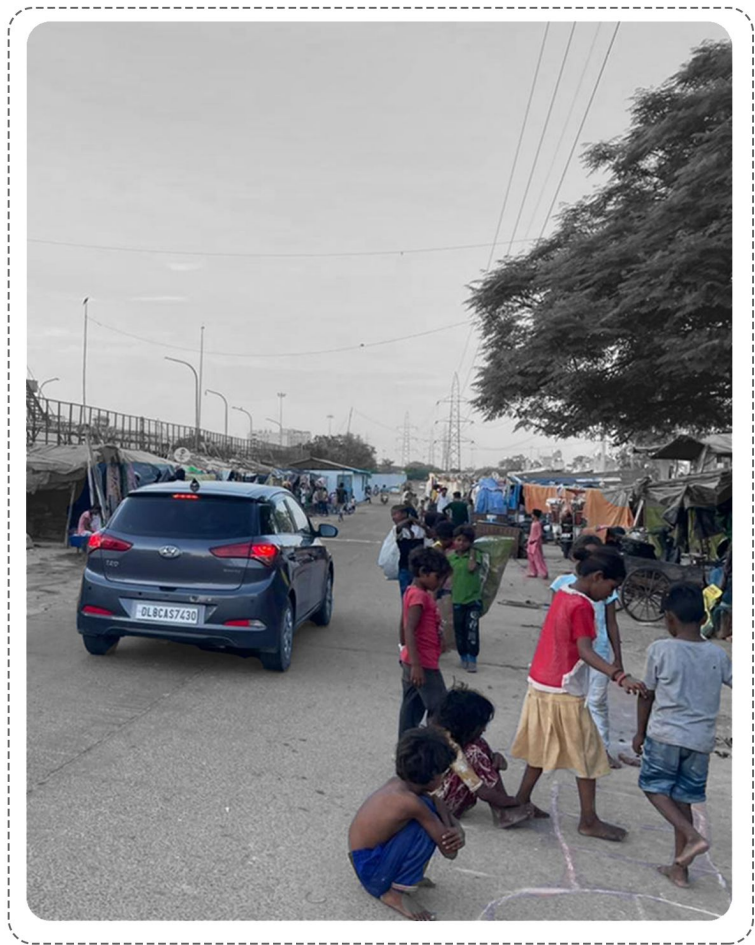
2014
Number of settlers rises, coming under the notice of Delhi government, which in-turn provides Rahen Basera and proposes a park for the society.



2019
Under political clash, the park gets gated and turns into dumping ground resulting into losing the only green space in the locality.



Settlement along the road



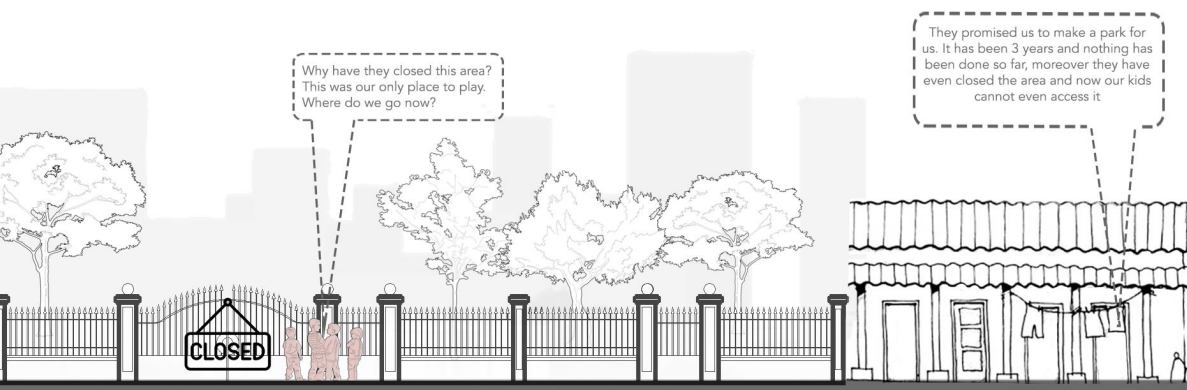
Children playing on the road

HISTORY

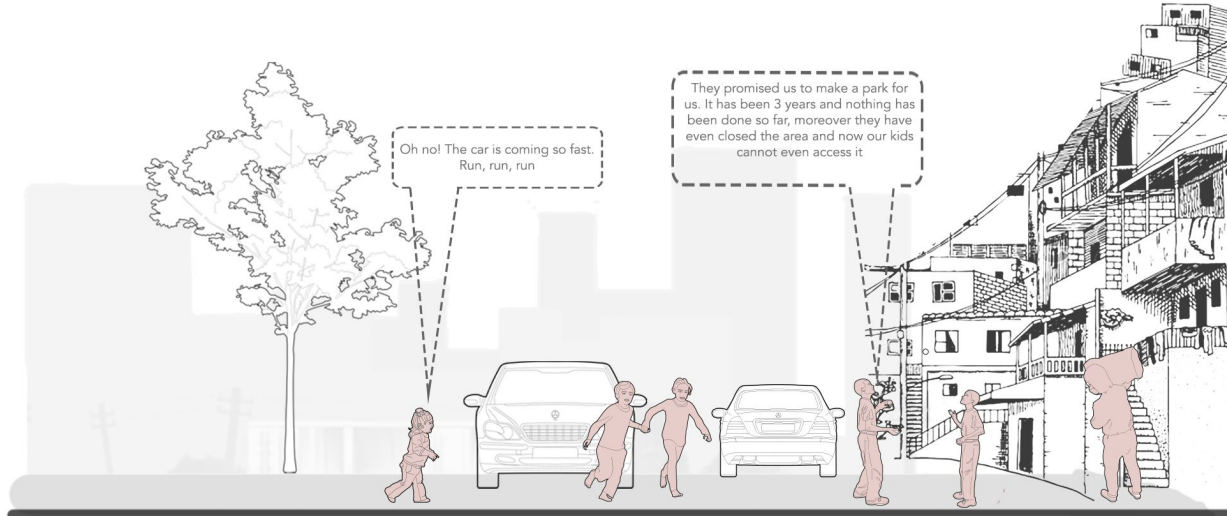
The community's history may be traced back to a temporary colony in the Parsvanath housing land, from which they were forcibly evacuated 25 years ago and relocated themselves next to the road leading to the highway. The bastis began to expand throughout Majnu ka Tilla's interiors and today shelter around 1200 labourers, craftspeople, beggars, and ragpickers.

CONTEXT

Our intervention revolves around the young generation from the settlements as well as from around the basti in Majnu ka Tilla, who look for a 'breathing space' in the tightly packed housing patterns. The need of open spaces call for such intervention where we try to prevent the out-spill of children on the streets looking for any recreational space possible, and bring together a safer society.



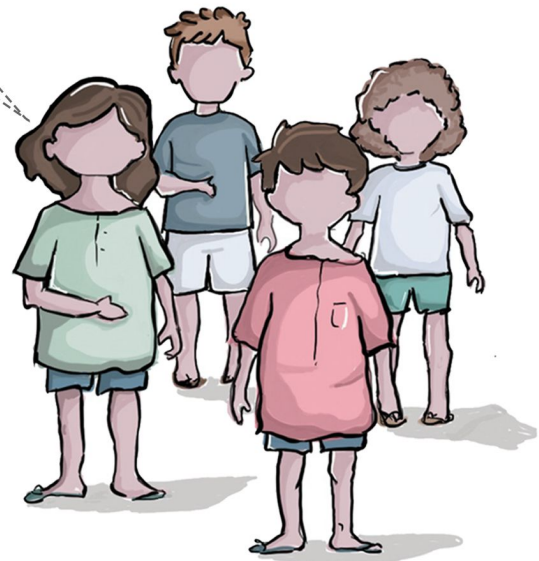
They promised us to make a park for us. It has been 3 years and nothing has been done so far, moreover they have even closed the area and now our kids cannot even access it



Why do we have to risk it all?



Is there any place where we can be?



STORYLINE

As per Survey of India, our country experiences around 415 deaths per day due to road accidents which brings up the concern of road safety and awareness in youngsters. Due to lack of recreational/open spaces in the locality children tend to come on streets for playing and having leisure time in the evening. This leads to higher possibility of road mishap and danger to life of already under privileged people.

Daily routine of the children revolves around ragpicking, loitering around the streets and running errands all day. The nearest recreational zone for the kids is also 1.5 KM away from the settlement, making it inaccessible on a daily routine.

3 killed & 2 injured in 4 separate road accidents

Slum-dwellers raise a stink about garbage dumping

Girls mark out their own unsafe spaces

'70% of the ragpickers are women'

LB Nagar: 2 women hit by car, injured
 In LB Nagar, two elderly women were injured when a car for a medicine store overtook a rickshaw on Wednesday afternoon. The victims, 65-year-old Sunita Devi and 60-year-old Sunita Devi, were both residents of LB Nagar. The accident occurred at 7:00 pm. Both the women were taken to the hospital for treatment.

Teen girls from slums equipped with life skills
DOMESTIC LABOUR
 City Kids Trust has been providing life skills training to 100 girls from slums in the city. The girls are being trained in various skills like cooking, sewing, and tailoring. The training is being provided by a team of experts from the organization. The girls are also being provided with a stipend during the training period.

Majnu ka Tilla: Struggle for identity a way of life for North Delhi's Tibetan refugee colony
 Majnu ka Tilla: Uncertainty looms over 700 Pakistani Hindu refugees as NCT directs authorities to remove encroachment.

30% of kids in city slums underweight: CRY survey
 A survey conducted by the Child Rights and Resources Centre (CRY) has revealed that 30% of children in city slums are underweight. The survey was conducted in various slums across the city. The findings of the survey are alarming and call for immediate action to address the issue of malnutrition in city slums.

New wave of migration to start

Once ruled by slumlords, now under politics' sway

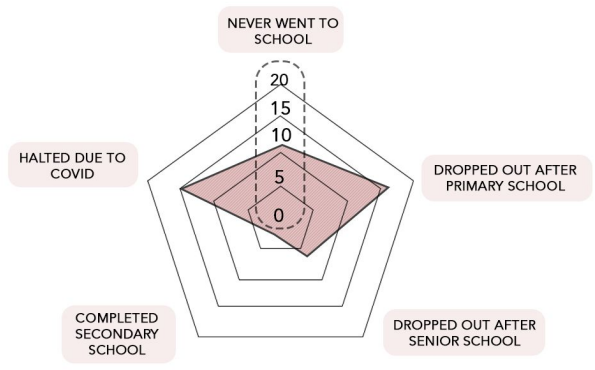


STONE LABOUR

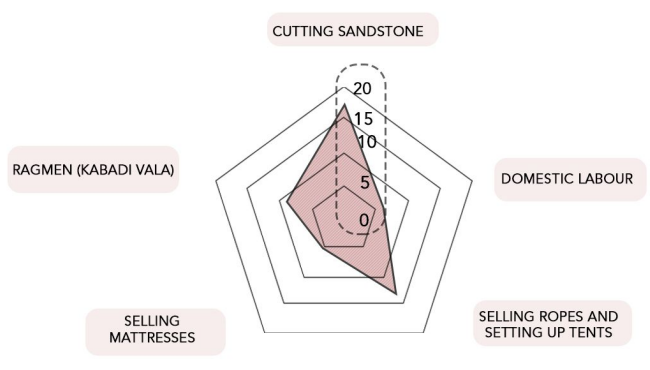
RAGPICKERS

TENT MAKING

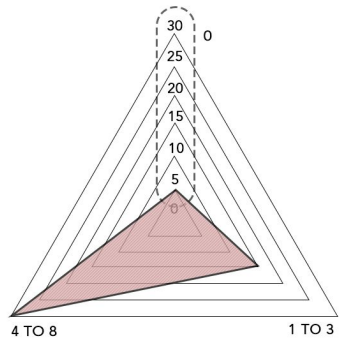
NEED ASSESSMENT



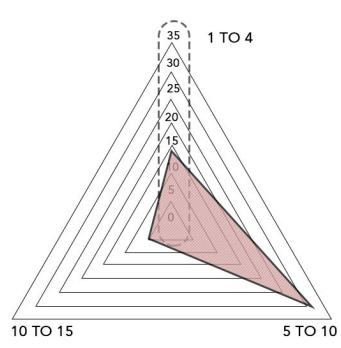
Education



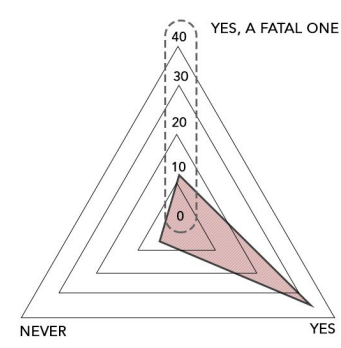
Source of Income



Number of Kids in the Family



Number of Family Members



Accidents while Playing on road

STAKEHOLDERS

Majority of the people in the settlement have an occupation of making and putting up tents for wedding in various parts of North Delhi. Elders who are unable to do the tent work have started to cut sandstones (Silvatta) at their home and selling it on the streets. The ladies of the house are mostly busy in household chores and preparing whatever food that they can for the family and some go out to sell cloth wire and other ancillary stuff. Majority of the kids are into ragpicking and finding their luck in garbage.

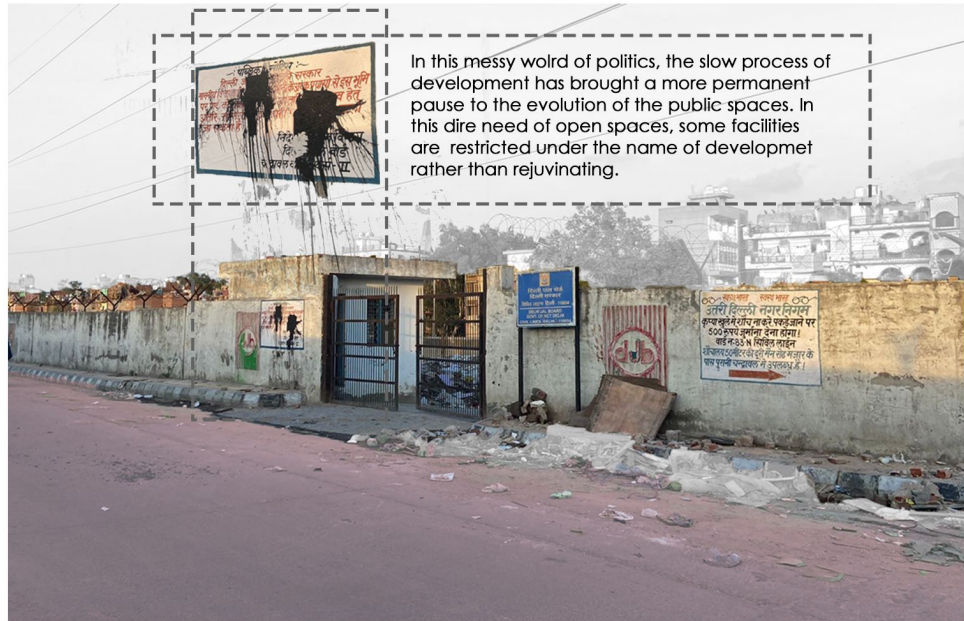
ANALYSIS

On average, there are 7 members in each family, out of which 4-5 are youngsters. The men are the income generators who rely on cutting sandstone, selling ropes, tents and mattresses and ragpicking. Most of the children never went to school or dropped out after completing primary education as they don't have a promising identity proof to take admission in senior school which further was halted due to the covid crisis. There are numerous encounters of road accidents out of which 24% were fatal and 66% were non fatal.

CONCEPT



The people of Aruna Nagar are running out of social space. They have to manage with whatever space they can find on the roadside, putting themselves in harms way, LITERALLY.



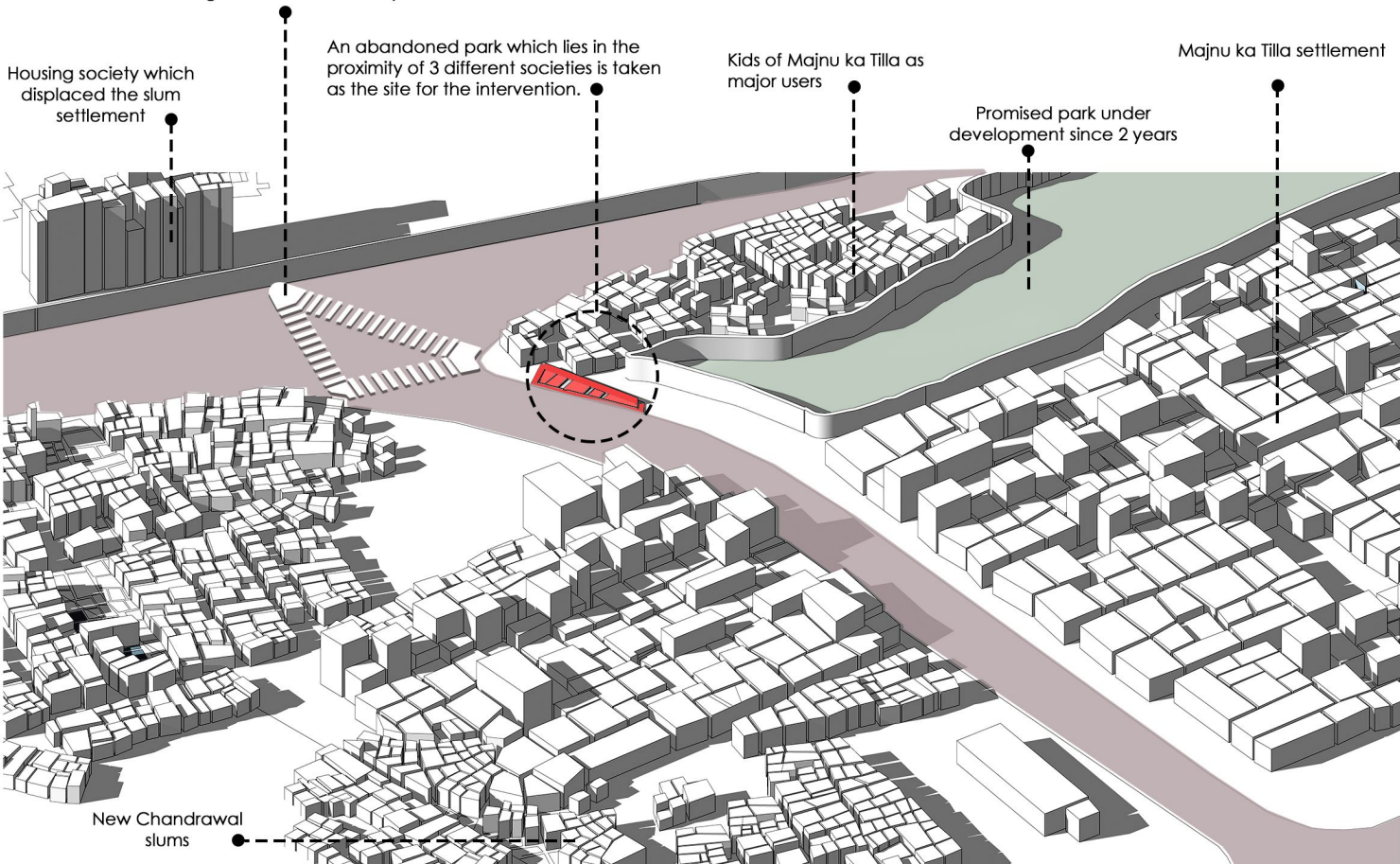
In this messy world of politics, the slow process of development has brought a more permanent pause to the evolution of the public spaces. In this dire need of open spaces, some facilities are restricted under the name of development rather than rejuvenating.



The community is left with no other choice but to find whatever suites them best in the given scenario. Young boys and girls have no option but to come out on streets to play. Being part of the highway, these roads turns out to be a major threat towards the safety of the children. With insufficient infrastructure of zebra crossings, traffic lights, and speed breakers, the traffic goes unregulated.



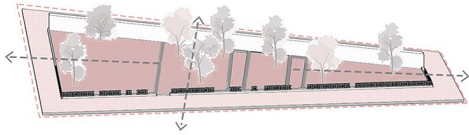
Small scale intervention: 3D art zebra crossing to slow down cars by a second.



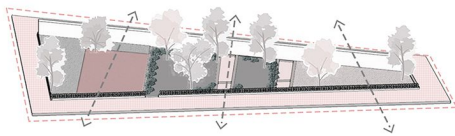
CONSTRUCTION PHASE



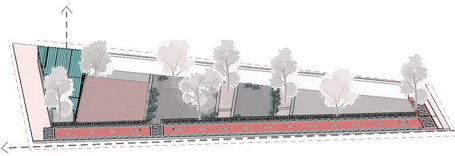
01 The existing site is no longer maintainable and socially available due to the covid crisis



02 The site is cleaned and levelled to re-create place of socializing and gathering



03 Existing partitions on the site have been utilized to divide different activity zones.

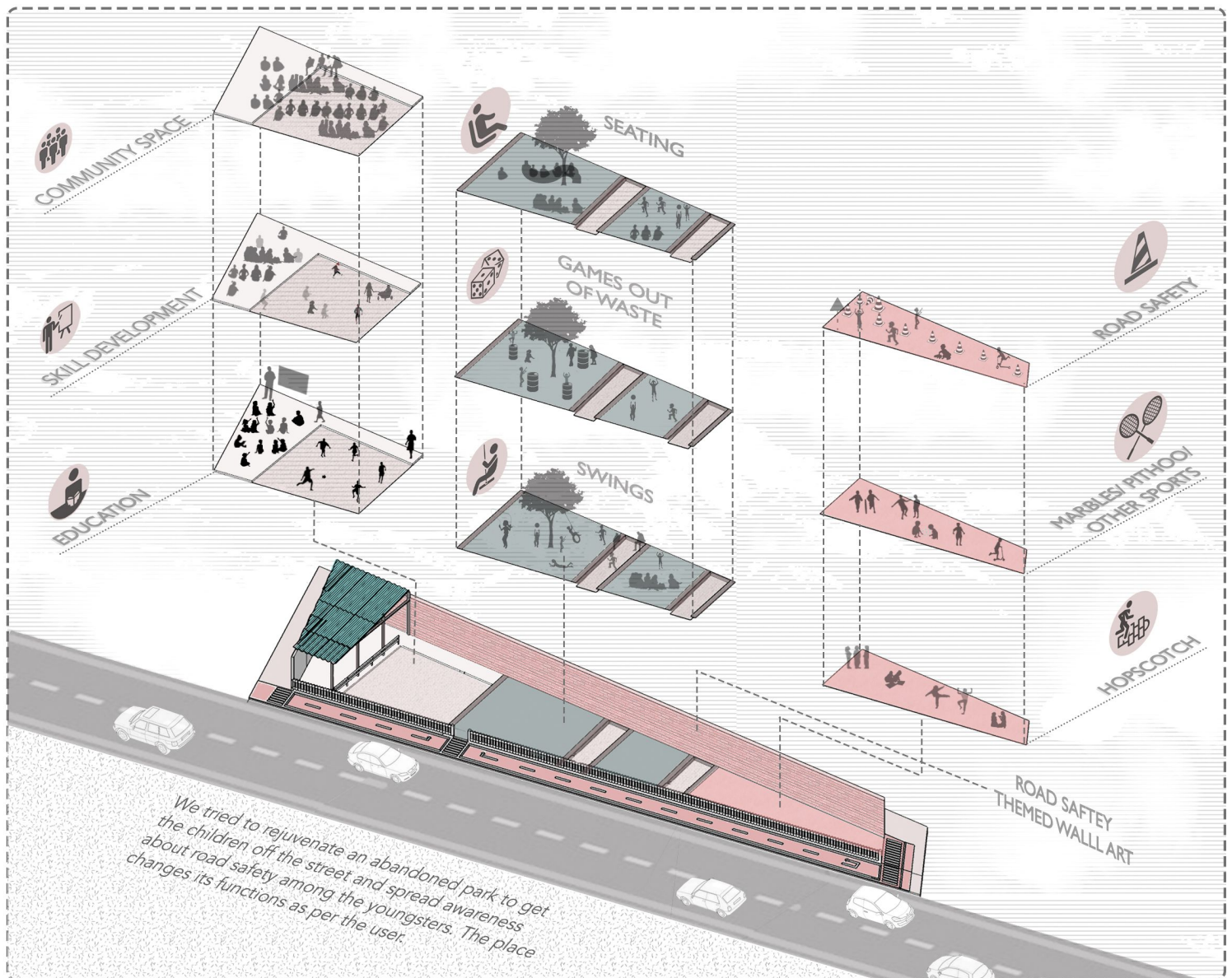


04 Maintenance of broken fence and landscaping is done to make the space more lively.

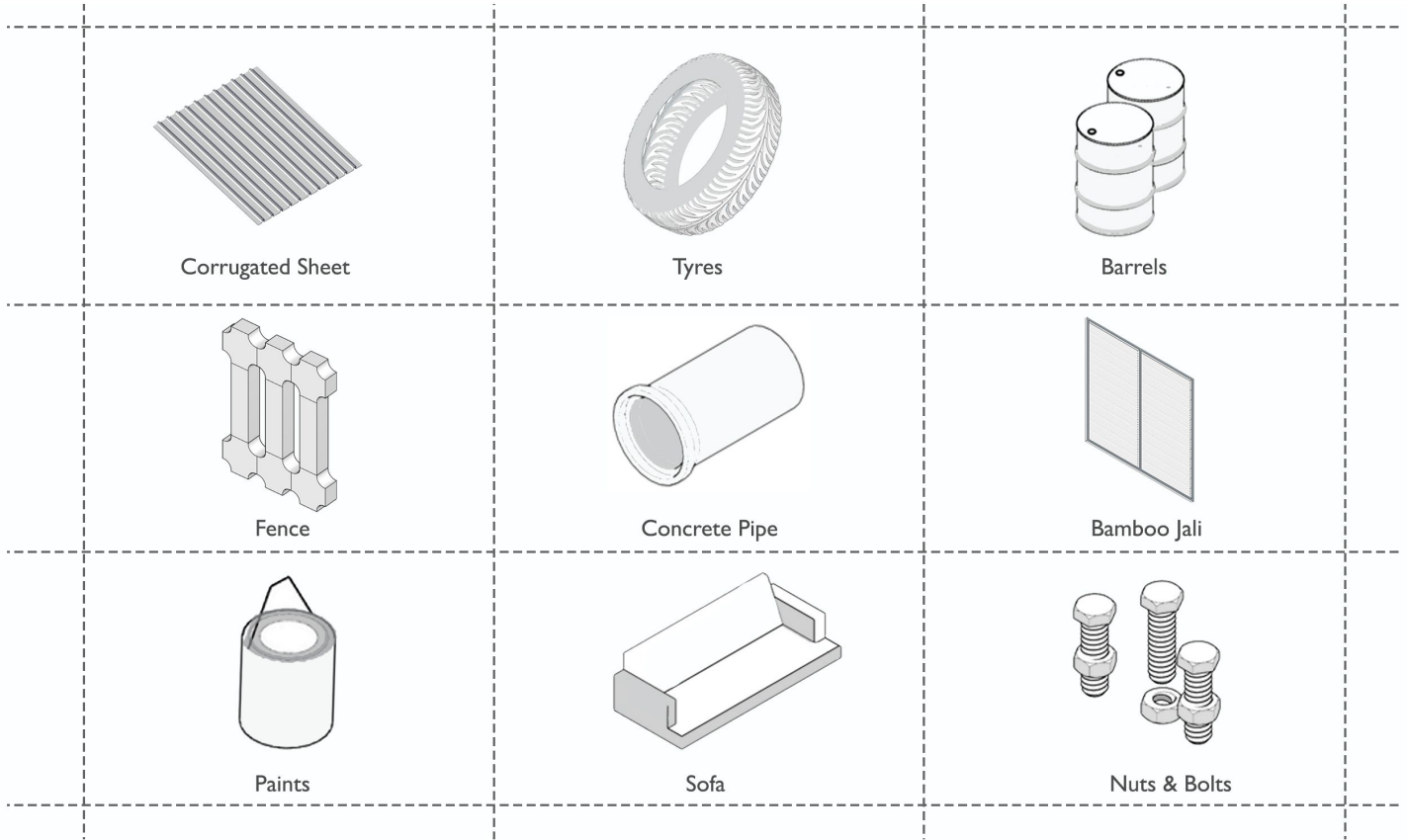
EXISTING PARK



FUNCTIONS



MATERIAL PALETTE



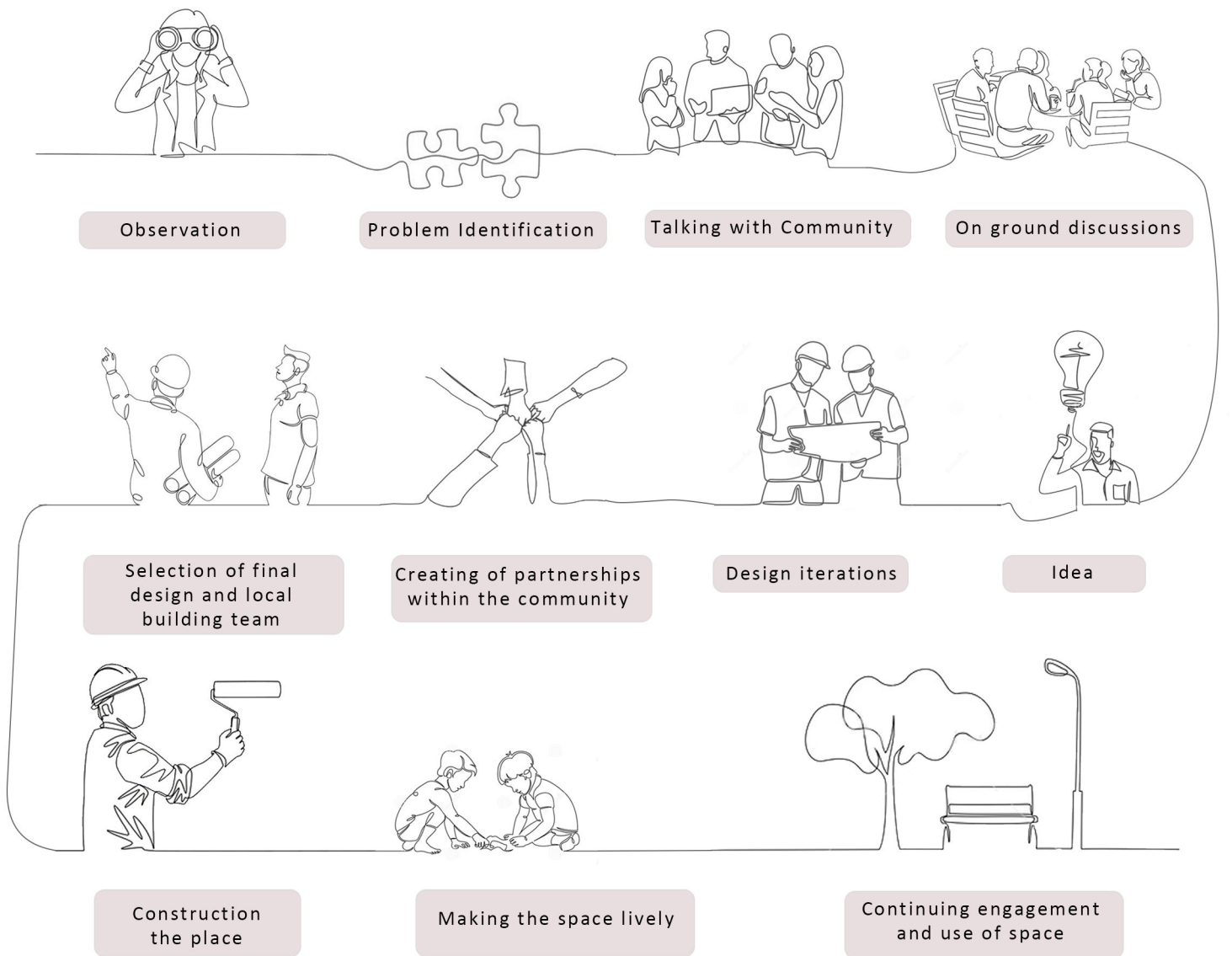
COST ESTIMATION

S.NO.	MATERIAL	DESCRIPTION	UNITS	PRICE	QUANTITY	TOTAL COST
1	Corrugated sheet	1.9m ² per sheet, 3mm thickness	Cost per sheet	900	5	4500
2	MS Flat section	500 width, 2.5 mm thickness	Cost per meter	40	50	2000
5	Blackboard	5ft length, 4ft width	Cost per piece	2,000	1	2000
6	Tyre swing	65mm thickness	Cost per piece	135	5	675
7	Sand		Cost per 25KG	980	10	9800
8	Paint for zebra crossing					5000
9	Pavement art		Cost per Sq.mtr.	400	85	34000
10	Wall art	250ml aerosol spray paint	Cost per piece	125	63	7875
11	Road reflector	110 mm x 90 mm x 18 mm	Cost per piece	45	20	900
12	Concrete pipe					0
13	sofa for sitting					0
14	Road signs	triangular 300,900,1200 mm size; 3 and 4mm thickness	Cost per piece	550	5	2750
15	Barrels	material- bitumen steel	Cost per piece	100	5	500
16	Bamboo		Cost per feet (sq)	40	400	16000
17	Rodi					1000
18	Fence maintenance					5000
19	Nuts n bolts		Cost per KG	300	2	600
Total A						92600
20	Skilled workers wage		Wage per day	679	1	679
21	Unskilled workers wage		Wage per day	558	2	1116
Total B*						1795
Total A+B						94395

* Charges may vary as per no of days

Materials contributed by the community
Possibility of acquiring more materials from the community

BUILDING WITH THE COMMUNITY



Wall art by the community

The main focus of our intervention is not about what we build but how we build. Community plays not only a crucial role in helping a structure being put together but also how they keep it after completion of the project. Community involvement is necessary as when people involve in the process of place making, they have a sense of belonging. And when one develops a sense of belonging the person does efforts towards maintaining the place and keeping it alive as he/she has put in efforts in it. Not only our intervention focus on for the people but also by the people, as they play a vital role in keeping that place workable after the fellowship end.

Our involvement with people is not limited to utilizing the material that they provide but also uplifting the craftsmanship of the society. People call a place theirs only when they have a part in it to play. Our design is self-mouldable as per the needs of the user, the free will of free people. Providing spaces which has an endless solution and visions helps the place to change as per the need of the user. A design is successful only when it exceeds the estimated tenure and serves a purpose more than the initial thought. It's a success only when it's for the people and by the people.

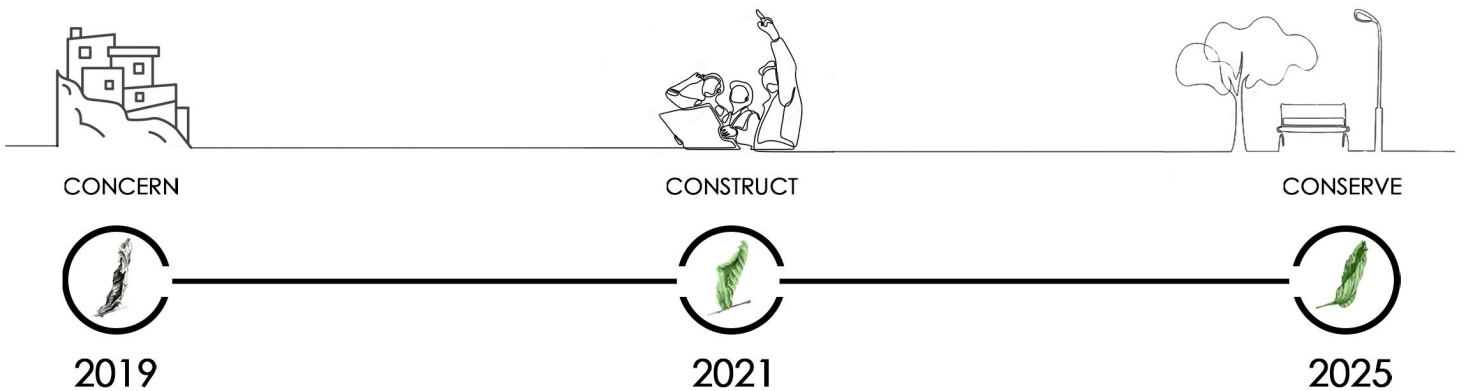


UNIVERSALITY

The idea of Udyaan is as scalable as possible, because the fundamentals are on the requirements and not any specific design setup. The issues addressed are common not only to rehabilitation colonies but to many other communities too. Also, the project idea is so vast and simple that it can be carried out easily by the people of the community itself. Our design is not only an intervention but a theory which reflects the need of a space and turning abandoned spaces into multipurpose zones. The idea is to imbibe such a habit of creation of similar communal spaces, which a community takes pride to own and call it their own. The current crisis has created spaces which are no longer maintainable and socially available, we try to rejuvenate and re-create such places into a locus of gathering and socializing. Now is not the time to create new but to recreate and recharge what we have.

IMPACT

If and when implemented, the Udyaan project will be an eminent approach which will reduce the risk of life of those with whom the future lies. Bringing youngsters the knowledge needed to be more secure in this hardship and providing society its lost space and identity. Children who now play on the streets will have a secured space for recreation. Kids who spend their time ragpicking will now have a purpose and a place to spend their day. The parents who are forever worried about their children on the streets will be now at peace and can concentrate on the well being of the family. The elder who is bothered about the future of these kids are now stress free seeing that the children are doing something more productive in their lives. All these attempts are possible only with the help of the community to bring together a safer and a greener space.



Video link: <https://www.youtube.com/watch?v=hmO4bFHf7RY>